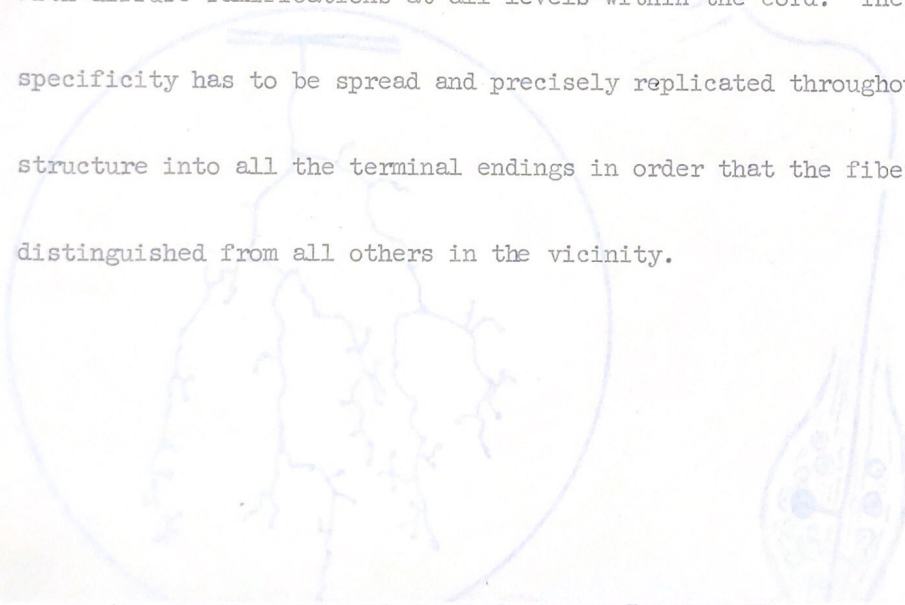
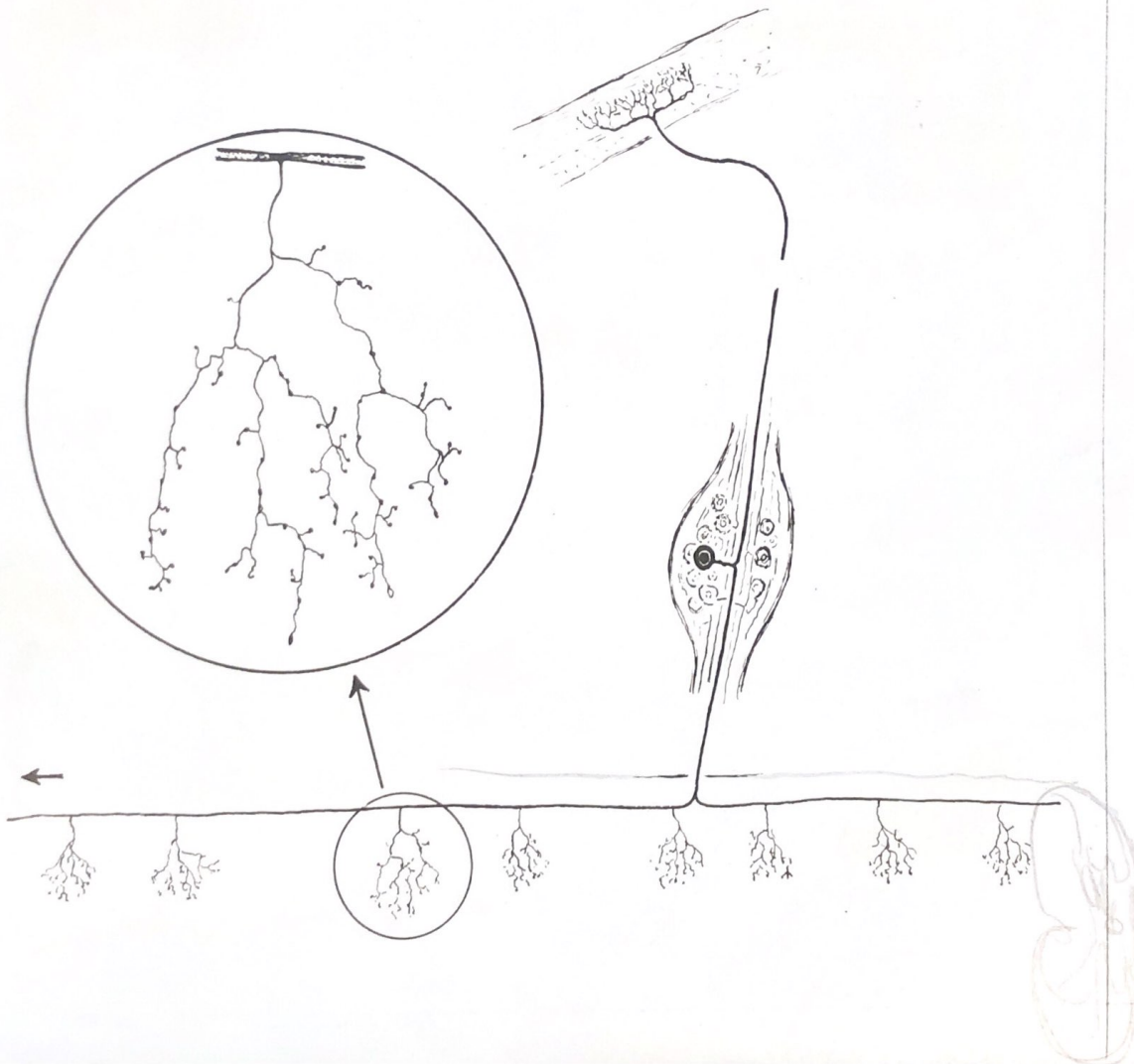


A cutaneous nerve fiber for touch sensation running from the ~~skin~~  
(up to 20' or so in giraffe)  
skin into the spinal cord typically extends for long distances up and down  
with diffuse ramifications at all levels within the cord. The local sign  
specificity has to be spread and precisely replicated throughout the entire  
structure into all the terminal endings in order that the fiber may be  
distinguished from all others in the vicinity.





Spinal Cord (Lateral)