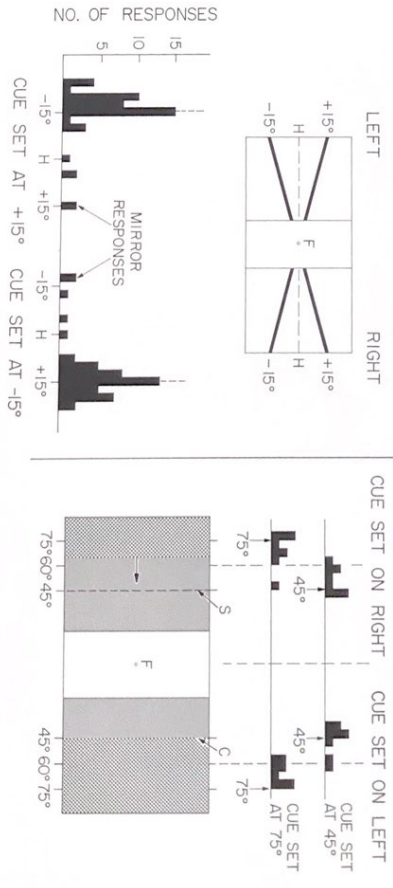
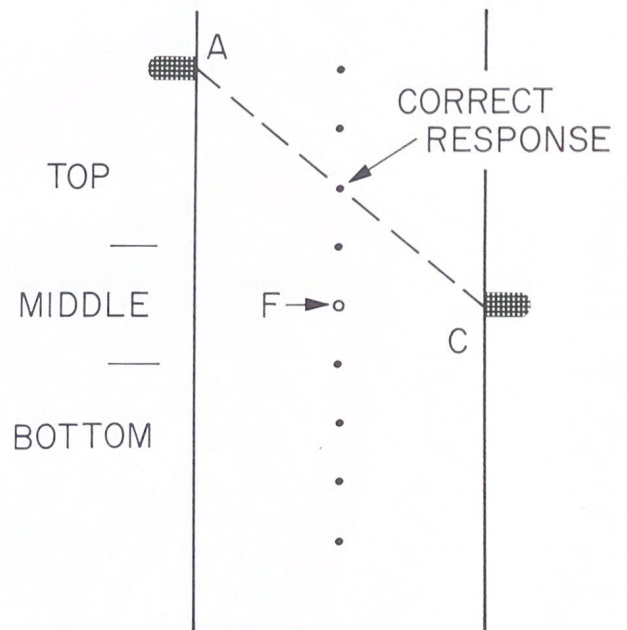
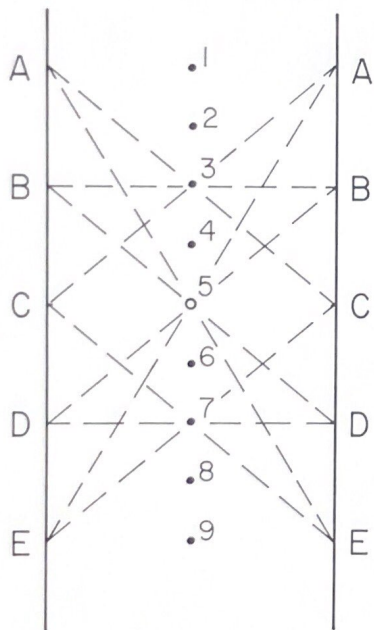
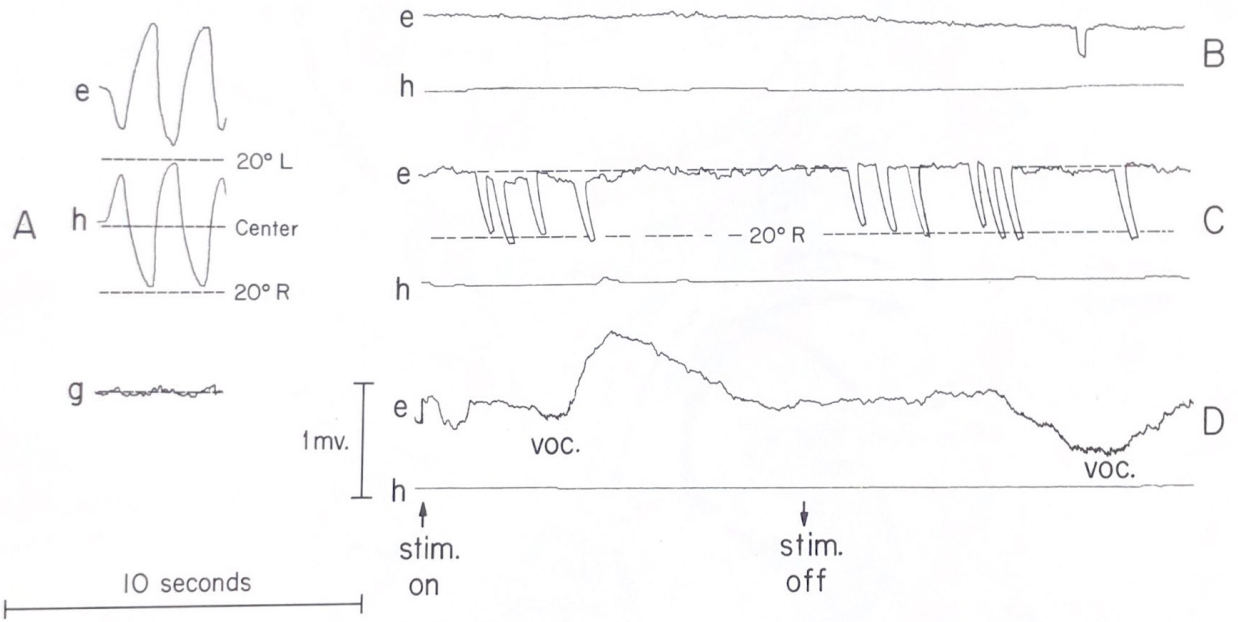


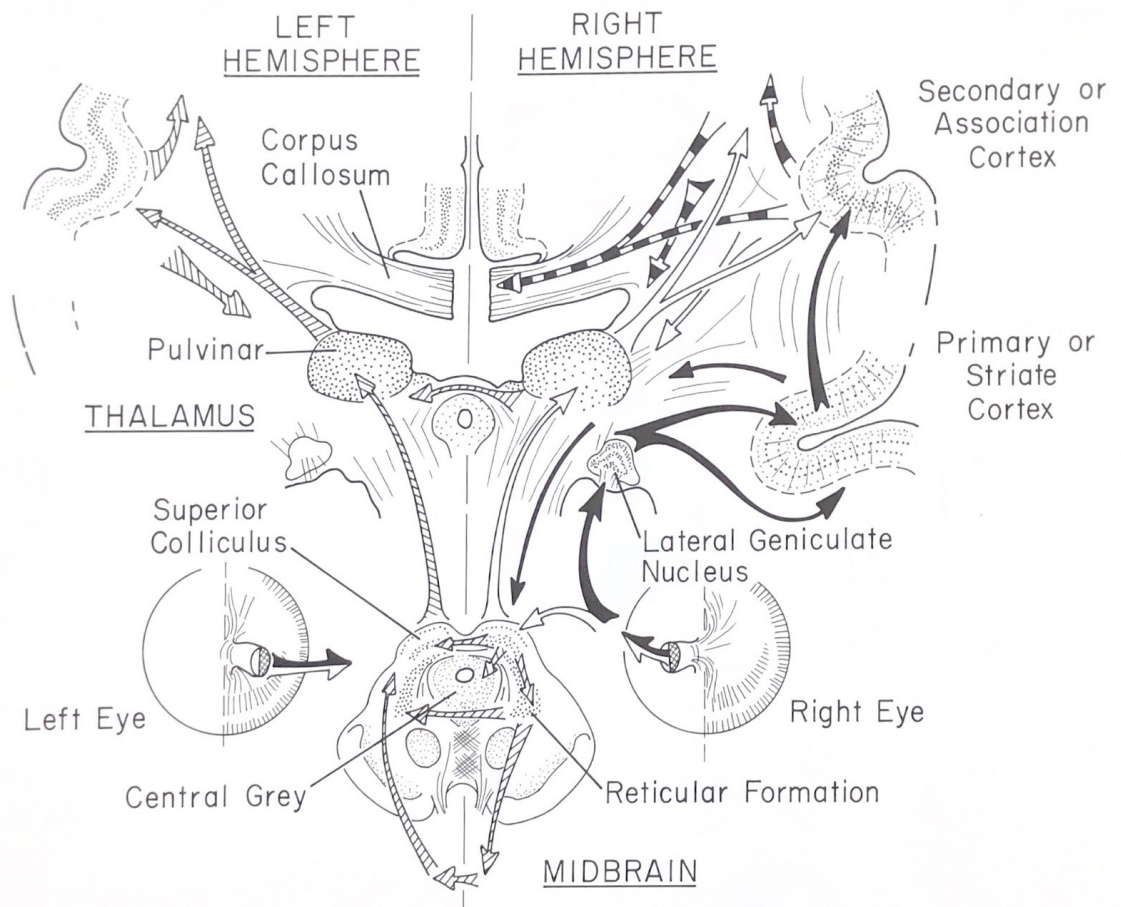
Fig. 2. Diagram of anatomical correction underlying study of amblyopia in communicating subjects.

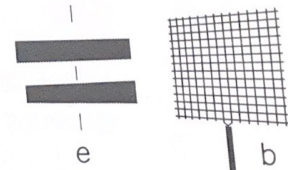
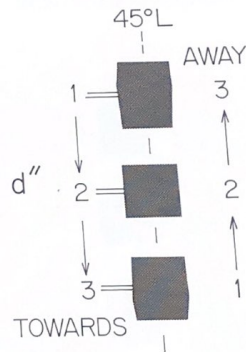
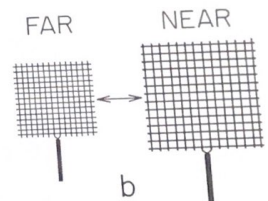
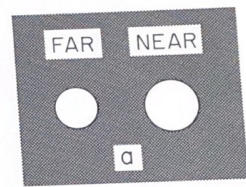
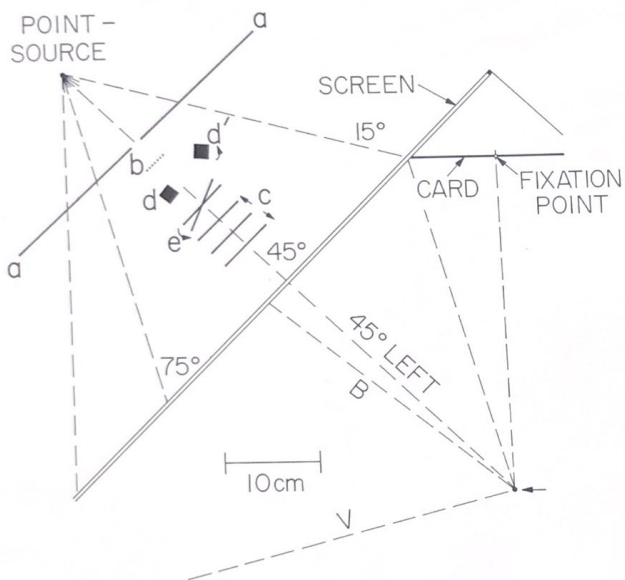
Draft for inspection by RUS. enclosed. Then → Graphic Arts.



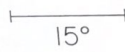




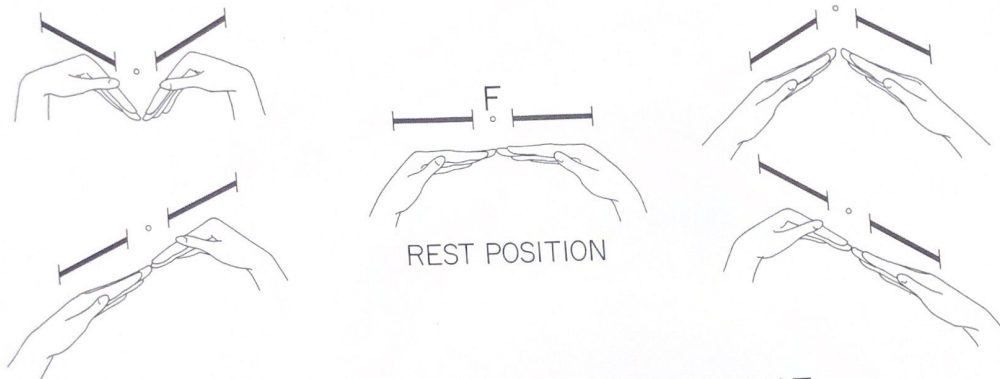




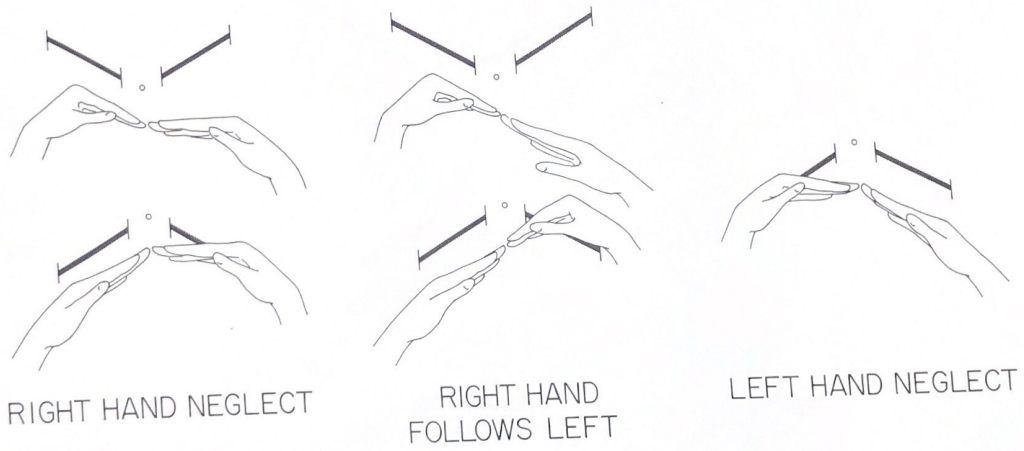
ROTATION THROUGH 20°

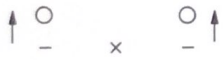
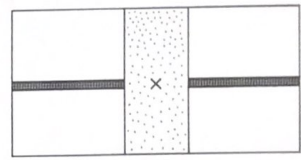
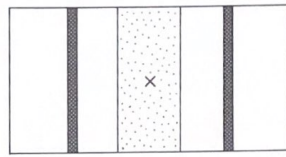
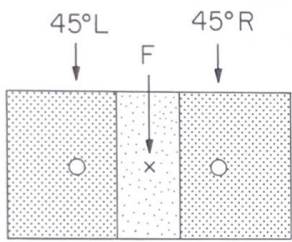


CORRECT RESPONSES WITH BOTH HANDS



RESPONSE ON ONE SIDE INCORRECT





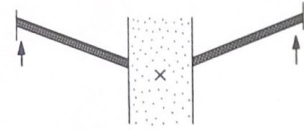
UP



NEAR



LEFT



UP



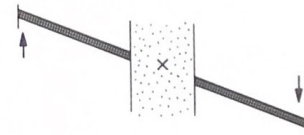
TWIST



TURN



OUT FAR



TWIST

A

B

C

D