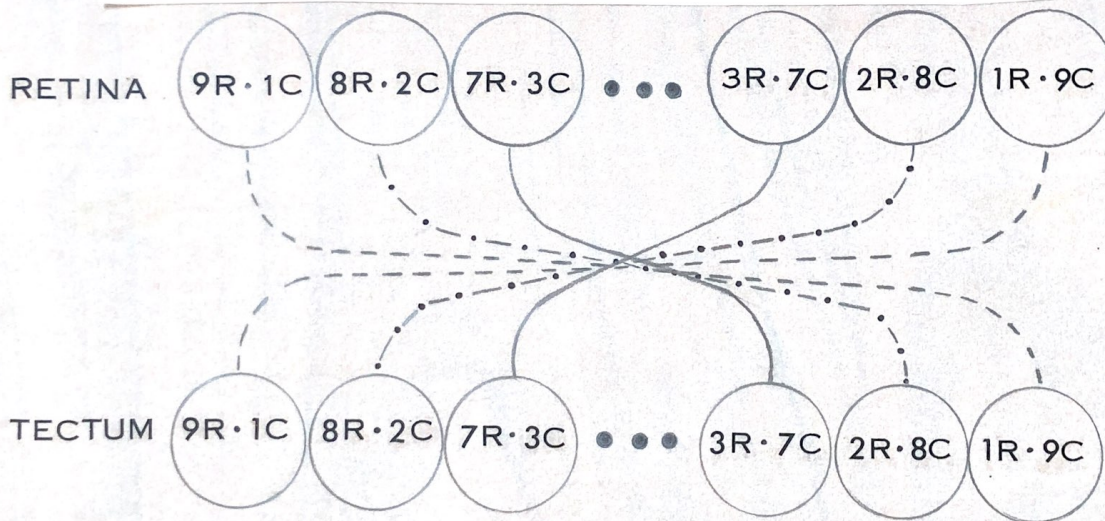
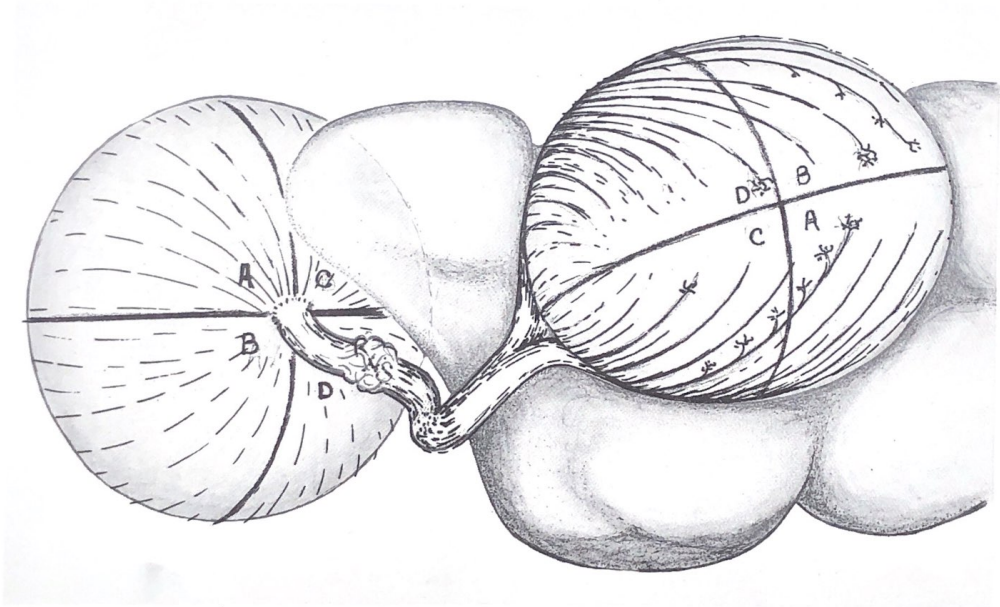


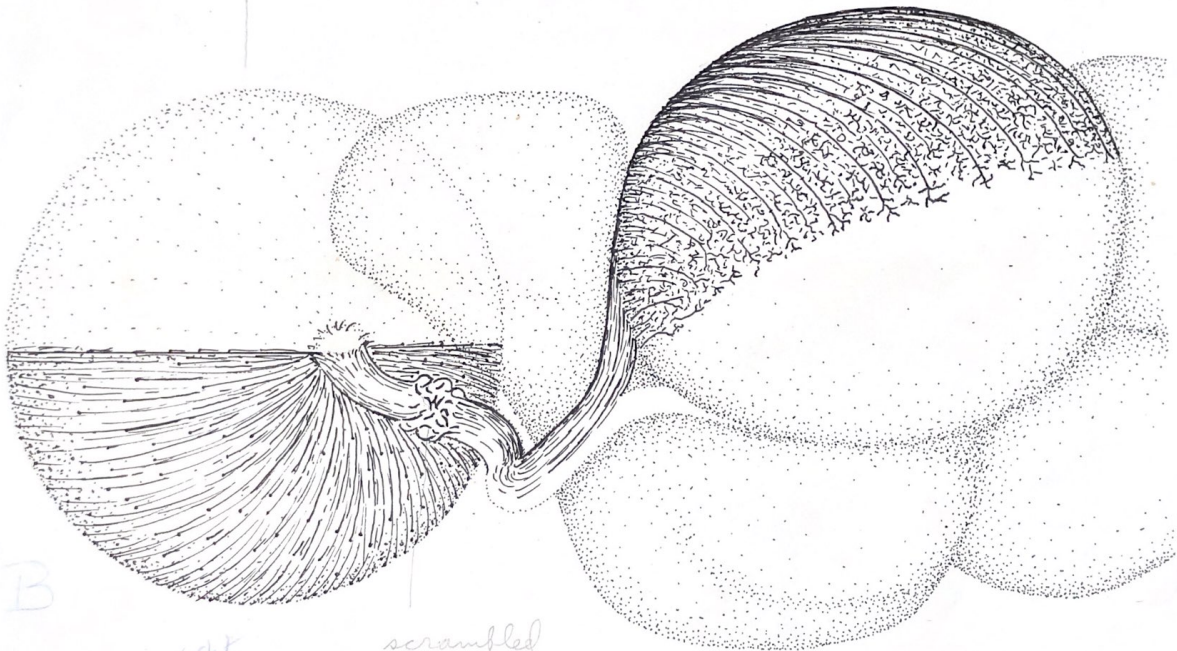
SCHEMA FOR COMPLEMENTAL ROSTRO-CAUDAL SPECIFICITY GRADIENT





dorsal hemiretina  
ablated

left tectum



B

right eye

scrambled  
nerve  
fibers

4  
Add. (C) B

5" W

Labels - C labels to  
keep overall depth with in main  
p (dratt) 6-2B (5/2)