

FIGURES FOR "AMBIENT VISION."

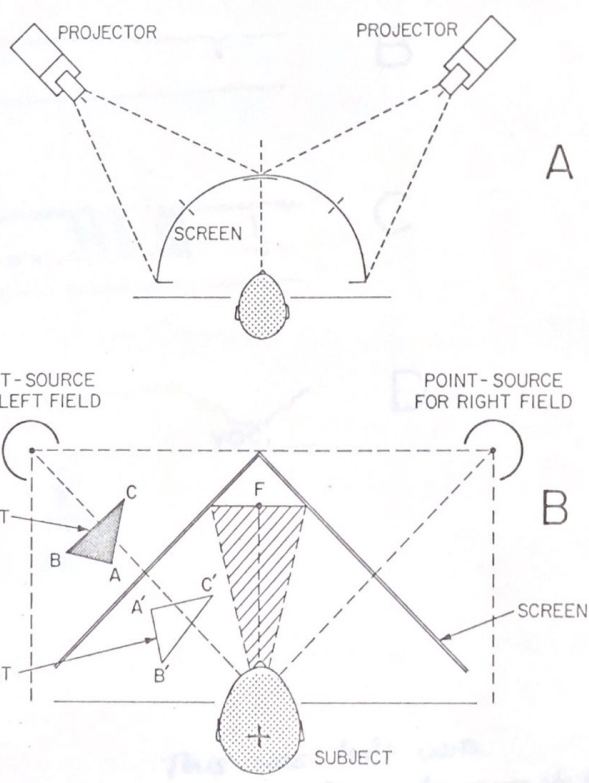
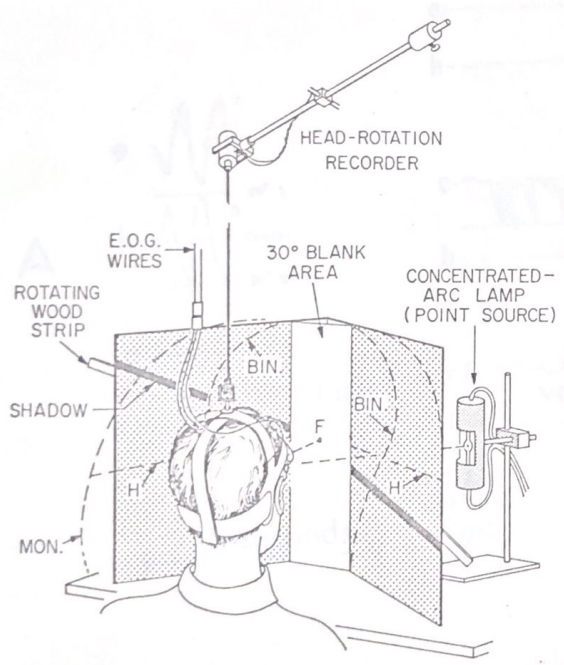


Fig. 1.

OK. I enclose the negative + 1 print.

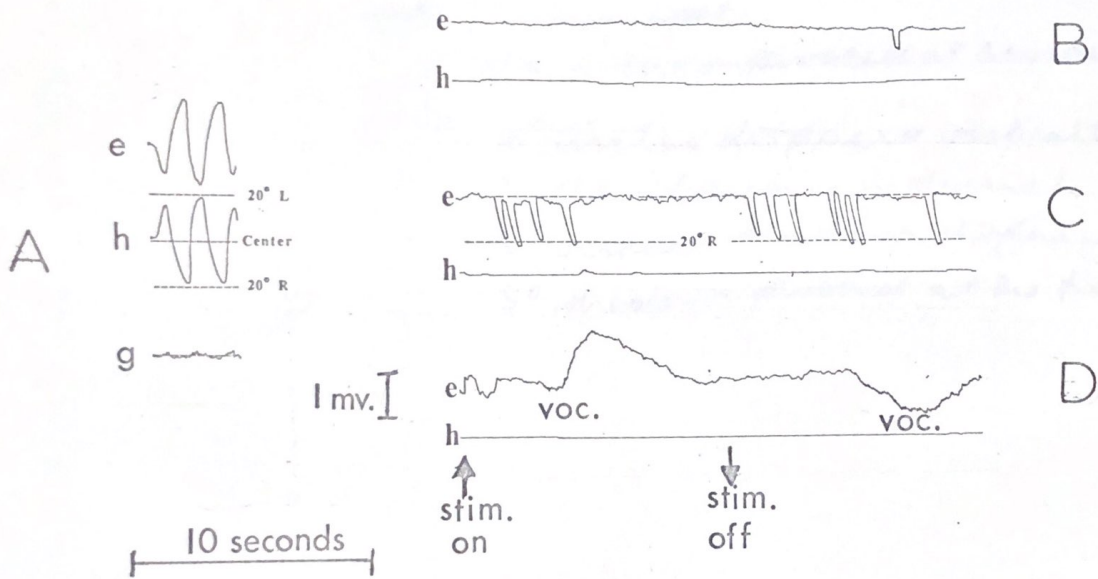


Fig. 2.

necess

This was left with Graphic Arts to complete drawing. They may have made negative + prints. Please check.

Fig. 3.

Cross-correlation tests

~~with 5° white spot~~

~~black bars pivoted at centers~~

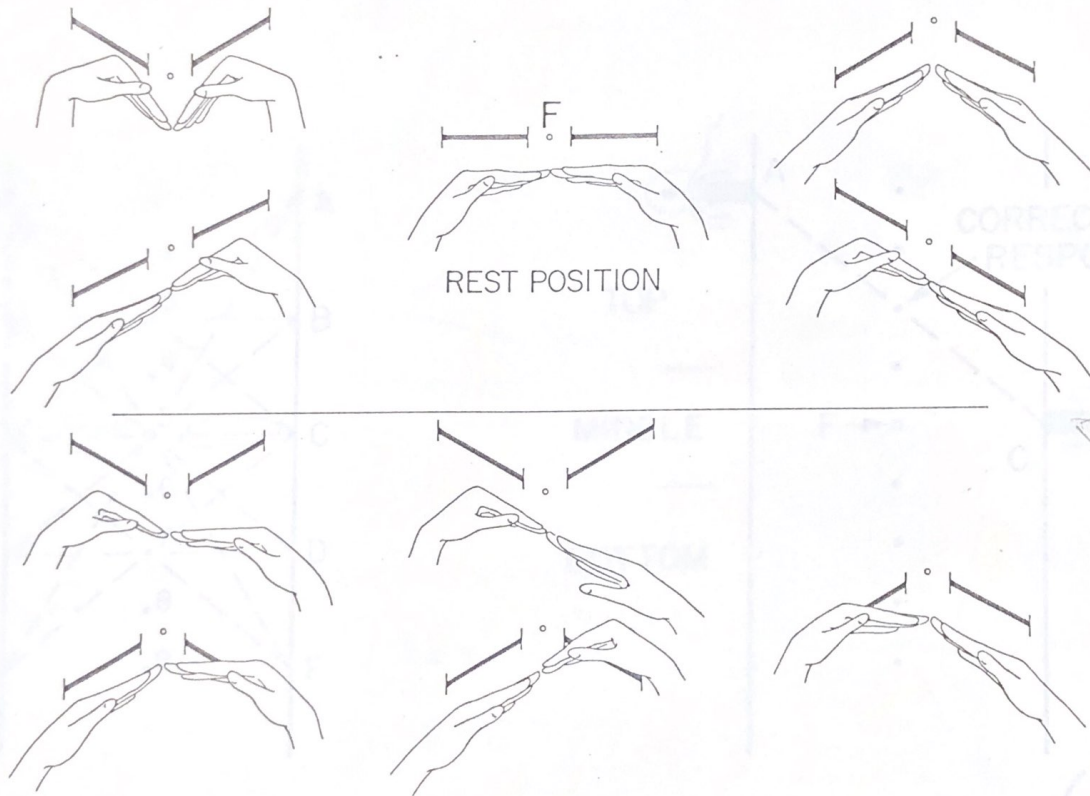
10° circles displaced vertically
circle, changing in diameter.

5° vertical shadow displaced sideways

5° shadow pivoted at the fixation point.

I don't think this has been
drawn. I enclose a sketch for it.
Check w. Graphic Arts work I left last
November, please!

CORRECT RESPONSES WITH BOTH HANDS



RIGHT HAND NEGLECT

RIGHT HAND
FOLLOWS LEFT

LEFT HAND NEGLECT

RESPONSE ON ONE SIDE INCORRECT

Fig. 4.

*Has been rearranged
in the negative
Neg. left w. Graphic Arts Nov. '71*

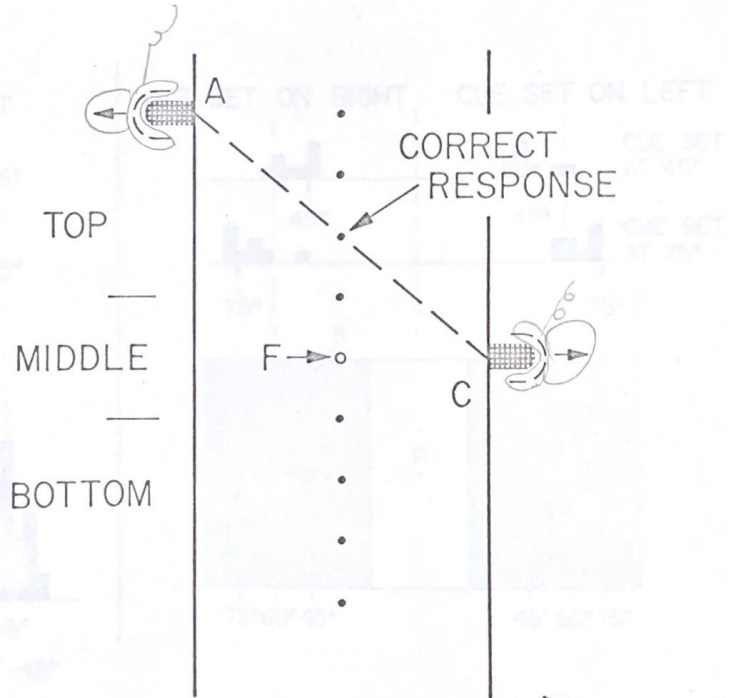
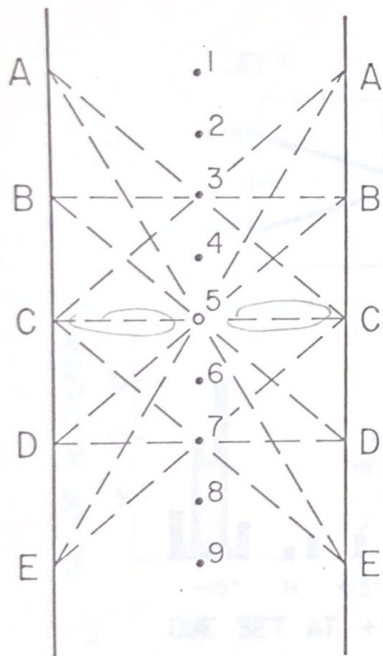


Fig. 5.

Left with Graphic Arts
 in November ~~to have~~ for
 blocking-out of unnecessary lines
 1 unit enclosed

'71.

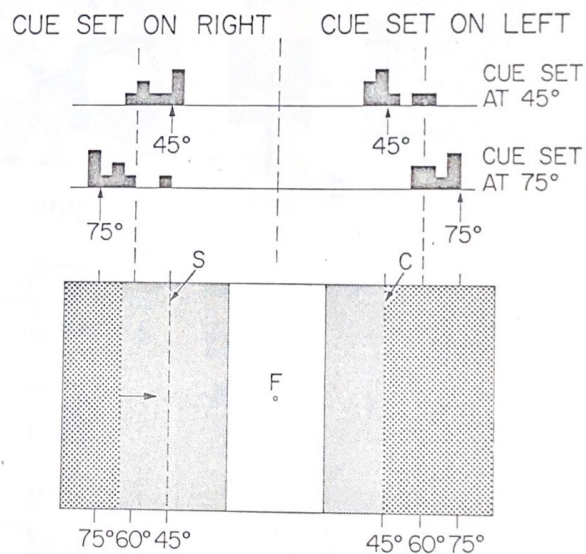
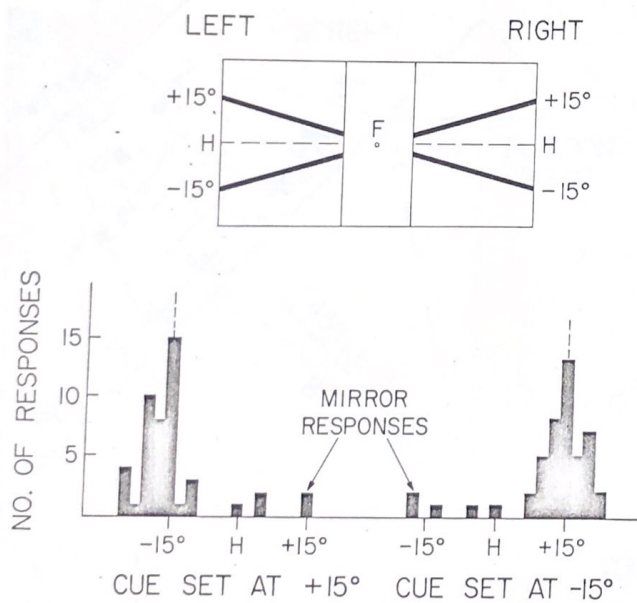


Fig. 6.

OK.

1 print enclosed.

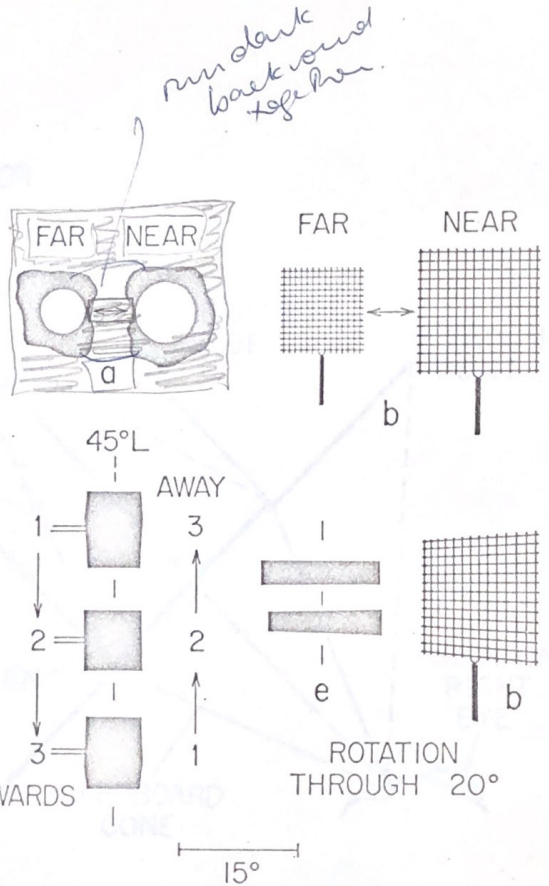
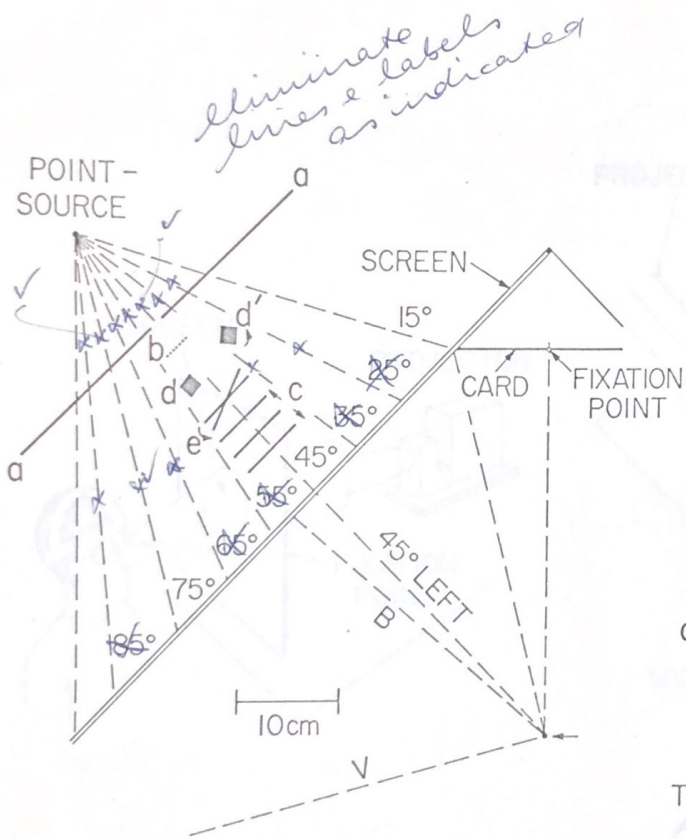


Fig. 7.

Altered and sent to Graphic Arts in November '71 for blocking-out and printing.

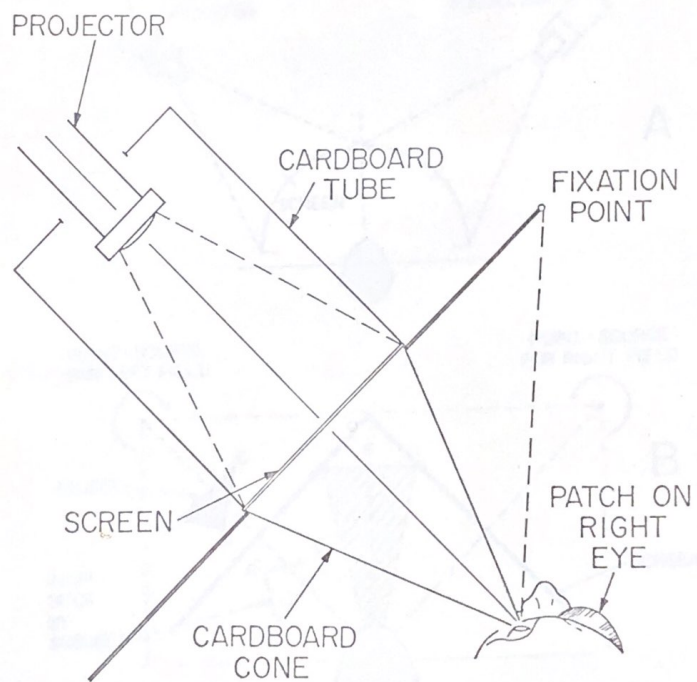
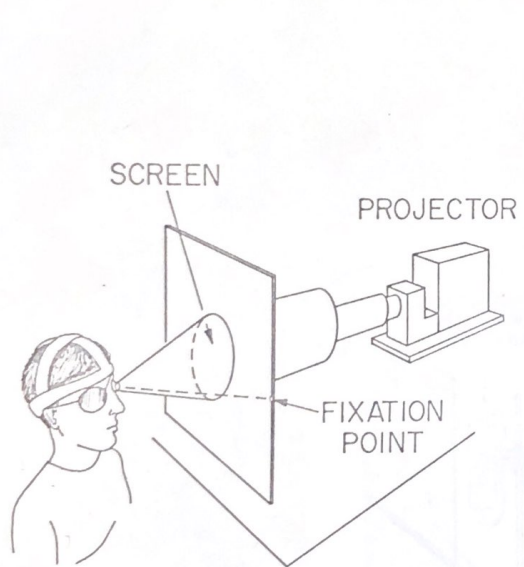


Fig. 8.

O.K.
 Negative included
 + 1 print